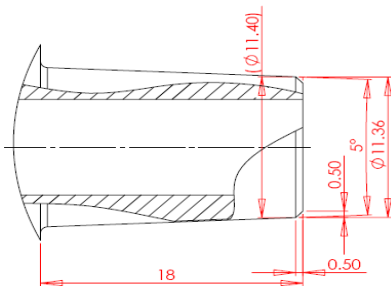


## Electrodes up to 20 kVA Tecna Machine

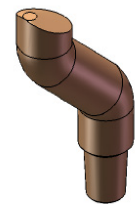
Part No	Description
3720	Standard
3722	Offset
3723	Cranked
3724	Single, Flat
3725	Single, Swivel



3720



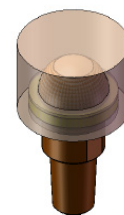
3722



3723



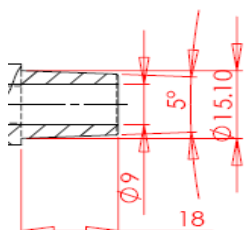
3724



3725

## Electrodes up to 25 kVA Tecna Machine

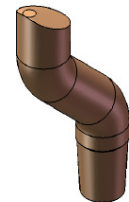
Part No	Description
3430	Standard
3431	Offset
3433	Cranked
3434	Single, Flat
3435	Single, Swivel



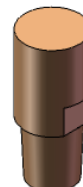
3430



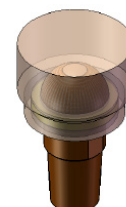
3431



3433



3434



3435